

January Assignments for Beginning Spanish

Segment 1

Due Friday, January 10th

- 1.00 Un viaje se mide mejor en amigos que en millas
- 1.01 Se habla español aquí

Due Friday, January 17th

- 1.02 ¿Cómo estás?

Due Friday, January 24th

- 1.03 ¿Cómo te llamas?

Due Friday, January 31st

- 1.04 ¿De dónde eres?



Segment 2

Due Friday, January 10th

- 3.00 No hay amor más sincero ...
- 3.01 ¡Me encanta comer!

Due Friday, January 17th

- 3.02 ¿Qué prefieres comer?

Due Friday, January 24th

- 3.03 ¿Qué prefieres comer?

Due Friday, January 31st

- 3.04 El restaurante



** Students working on an accelerated pace should go to pace under Course Information to find out what assignments you need to complete each week. You are responsible for your pace and progress in the course. This is meant to guide you.*

February Assignments for Beginning Spanish

Segment 1

Due Friday, February 7th

1.05 ¡El alfabeto!

Due Friday, February 14th

1.06 ¡Conversemos!

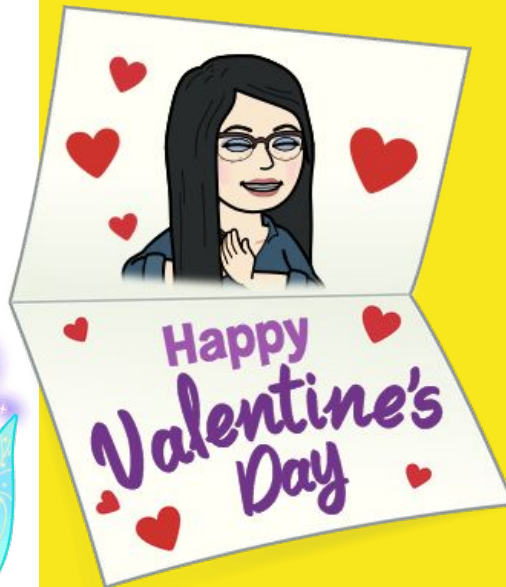
Due Friday, February 21st

1.07 ¿Quién eres?

1.07 Voice Activity

Due Friday, February 28th

1.08 ¿Cuántos años tienes tú?



Segment 2

Due Friday, February 7th

3.04 El restaurante

Due Friday, February 14th

3.05 ¡Escribamos una encuesta!

3.06 ¡Conversemos!

Due Friday, February 21st

3.07 ¿Cuánto cuesta?

3.07 Voice Activity

Due Friday, February 28th

3.08 ¡Decoro la casa!

** Students working on an accelerated pace should go to pace under Course Information to find out what assignments you need to complete each week. You are responsible for your pace and progress in the course. This is meant to guide you.*

March Assignments for Beginning Spanish

Segment 1



Due Friday, March 6th

- 1.09 Módulo Examen
- 1.09 Módulo Examen Parte 2

Due Friday, March 13th

- 2.00 Pretest Si quieres aprender, enseña
- 2.01 En la escuela

Due Friday, March 27th

- 2.02 ¿Qué clase tengo el lunes?
- 2.03 ¿A qué hora?

Segment 2

Due Friday, March 6th

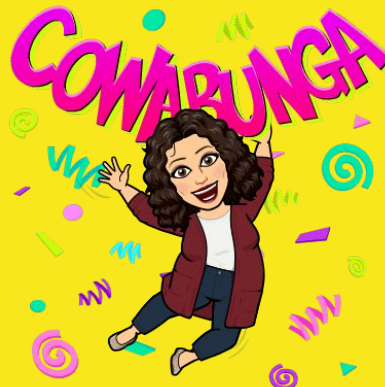
- 3.09 Módulo Examen
- 3.09 Módulo Examen Parte 2

Due Friday, March 13th

- 4.00 Mi casa es su casa
- 4.01 Voy a mi casa

Due Friday, March 27th

- 4.02 ¿Cómo es tu dormitorio?
- 4.03 ¿Dónde está el baño?



** Students working on an accelerated pace should go to pace under Course Information to find out what assignments you need to complete each week. You are responsible for your pace and progress in the course. This is meant to guide you.*

April Assignments for Beginning Spanish

Segment 1



Due Friday, April 3rd

2.04 ¿Qué te gusta?

Due Friday, April 10th

2.05 ¡Escribamos un blog!

Due Friday, April 17th

2.06 ¡Conversemos!

2.07 ¿Qué ropa necesitas para la escuela?

Due Friday, April 24th

2.07 Voice Activity

2.08 Me gusta la escuela

Segment 2

Due Friday, April 3rd

4.04 ¿Qué tengo que hacer?

Due Friday, April 10th

4.05 ¡Escribamos una descripción!

Due Friday, April 17th

4.06 ¡Conversemos!

4.07 ¿Cuánto cuestan los muebles?

Due Friday, April 24th

4.07 Voice Activity

4.08 La casa cuesta un millón de dólares



** Students working on an accelerated pace should go to pace under Course Information to find out what assignments you need to complete each week. You are responsible for your pace and progress in the course. This is meant to guide you.*

May Assignments for Beginning Spanish

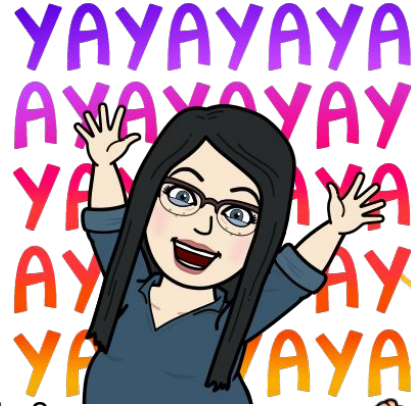
Segment 1

[Due Friday, May 1st](#)

2.09 Examen del Segmento Uno

[Due Friday, May 8th](#)

4.09 Examen Del Segment Dos Parte 2



Segment 2

[Due Friday, May 1st](#)

4.09 Examen del Segmento Dos

[Due Friday, May 8th](#)

4.09 Examen Del Segment Dos Parte 2



** Students working on an accelerated pace should go to pace under Course Information to find out what assignments you need to complete each week. You are responsible for your pace and progress in the course. This is meant to guide you.*

August Assignments for Beginning Spanish

Segment 1

Due Friday, August 16th

1.00 Un viaje se mide mejor en amigos que en millas

1.01 Se habla español aquí

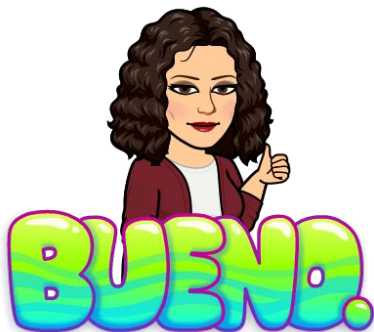
Due Friday, August 23rd

1.02 ¿Cómo estás?

1.03 ¿Cómo te llamas?

Due Friday, August 30th

1.04 ¿De dónde eres?



Segment 2

Due Friday, August 16th

3.00 No hay amor más sincero que el amor por la comida

3.01 ¡Me encanta comer!

Due Friday, August 23rd

3.02 ¿Qué prefieres comer?

Due Friday, August 30th

3.03 ¿Qué quieres comer?



** Students working on an accelerated pace should go to pace under Course Information to find out what assignments you need to complete each week. You are responsible for your pace and progress in the course. This is meant to guide you.*

September Assignments for Beginning Spanish

Segment 1

Due Friday, September 6th

- 1.05 ¡El alfabeto!
- 1.06 ¡Conversemos!

Due Friday, September 13th

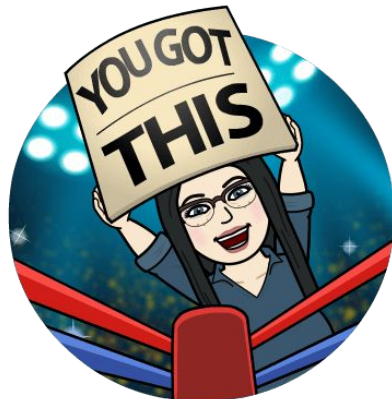
- 1.07 ¿Quién eres?
- 1.07 Voice Activity

Due Friday, September 20th

- 1.08 ¿Cuántos años tienes tú?

Due Friday, September 27th

- 1.09 Módulo Examen
- 1.09 Módulo Examen Parte 2



Segment 2

Due Friday, September 6th

- 3.04 El restaurante

Due Friday, September 13th

- 3.05 ¡Escribamos una encuesta!
- 3.06 ¡Conversemos!

Due Friday, September 20th

- 3.07 ¿Cuánto cuesta?
- 3.07 Voice Activity

Due Friday, September 27th

- 3.08 ¡Decoro la casa!



** Students working on an accelerated pace should go to pace under Course Information to find out what assignments you need to complete each week. You are responsible for your pace and progress in the course. This is meant to guide you.*

October Assignments for Beginning Spanish

Segment 1

Due Friday, October 4th

- 1.09 Módulo Examen
- 1.09 Módulo Examen Parte 2

Due Friday, October 11th

- 2.00 Pretest Si quieres aprender, enseña
- 2.01 En la escuela

Due Friday, October 18th

- 2.02 ¿Qué clase tengo el lunes?

Due Friday, October 25th

- 2.03 ¿A qué hora?



Segment 2

Due Friday, October 4th

- 3.09 Módulo Examen
- 3.09 Módulo Examen Parte 2

Due Friday, October 11th

- 4.00 Mi casa es su casa
- 4.01 Voy a mi casa

Due Friday, October 18th

- 4.02 ¿Cómo es tu dormitorio?

Due Friday, October 25th

- 4.03 ¿Dónde está el baño?

** Students working on an accelerated pace should go to pace under Course Information to find out what assignments you need to complete each week. You are responsible for your pace and progress in the course. This is meant to guide you.*

November Assignments for Beginning Spanish

Segment 1

Due Friday, November 1st

2.04 ¿Qué te gusta?

Due Friday, November 8th

2.05 ¡Escribamos un blog!

Due Friday, November 15th

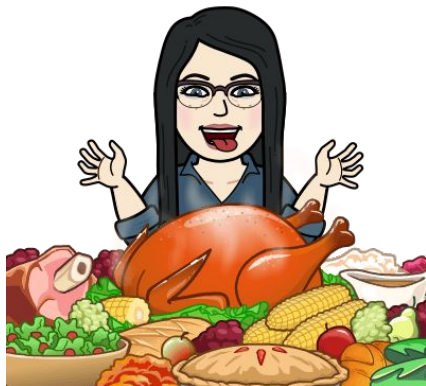
2.06 ¡Conversemos!

2.07 ¿Qué ropa necesitas para la escuela?

Due Friday, November 22nd

2.07 Voice Activity

2.08 Me gusta la escuela



Segment 2

Due Friday, November 1st

4.04 ¿Qué tengo que hacer?

Due Friday, November 8th

4.05 ¡Escribamos una descripción!

Due Friday, November 15th

4.06 ¡Conversemos!

4.07 ¿Cuánto cuestan los muebles?

Due Friday, November 22nd

4.07 Voice Activity

4.08 La casa cuesta un millón de dólares

** Students working on an accelerated pace should go to pace under Course Information to find out what assignments you need to complete each week. You are responsible for your pace and progress in the course. This is meant to guide you.*

December Assignments for Beginning Spanish

Segment 1

Due Friday, December 6h

2.09 Examen del Segmento Uno

2.09 Examen del Segmento Uno Parte 2



Segment 2

Due Friday, December 6th

4.09 Examen del Segmento Dos

4.09 Examen Del Segment Dos Parte 2



** Students working on an accelerated pace should go to pace under Course Information to find out what assignments you need to complete each week. You are responsible for your pace and progress in the course. This is meant to guide you.*